

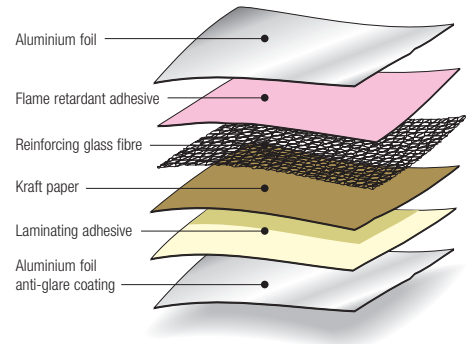
# SISALATION™ 439

## Light Duty Foil Laminate



### PRODUCT DESCRIPTION

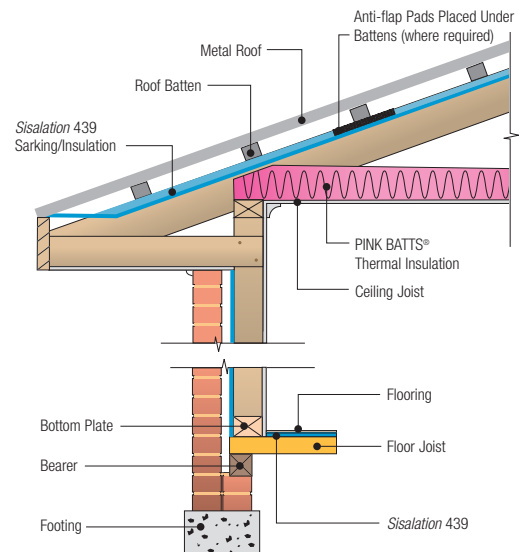
Insulation Solutions™ *Sisalation 439* is manufactured from an outer layer of aluminium foil bonded to both sides of a high density kraft paper. These layers are bonded together using flame retardant adhesive and reinforced with glass fibres arranged in a 12.5mm x 14mm grid. One aluminium face of *Sisalation 439* is blue to reduce any problems with reflected glare during installation.



### PRODUCT APPLICATION

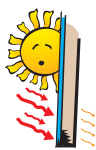
*Sisalation 439* is suited to applications where good all round strength, durability and ease of installation are required. *Sisalation 439* is ideally suited to use under metal roofs, in walls behind cladding or under timber floors\* for residential and commercial buildings under normal conditions.

\* Perforated *Sisalation* may be required under certain conditions.



### PRODUCT FUNCTION

#### INSULATION



When installed under a metal deck roof as an exposed roof lining, *Sisalation 439* will provide an additional R0.9 to R2.1 to a metal roof structure.

When installed as wall insulation behind brick veneer cladding, *Sisalation 439* may add up to an additional R1.3 to the wall system. Installation under suspended timber floor will provide additional R0.6 to R1.7 depending on direction of heat flow.

#### ENERGY EFFICIENCY



As insulation, *Sisalation 439* will reduce summer heat gain and winter heat loss in a building. Importantly this will enhance energy efficiency and help reduce greenhouse gas emissions. *Sisalation 439* has a high light reflectivity. When installed in buildings as an exposed internal roof lining, the reflectivity of the ceiling is increased by up to 40%. This reduces artificial lighting loads and further enhances energy efficiency.

#### PROTECTION



Under metal roofs and in wall systems, *Sisalation 439* will reduce the potential for condensation to occur, preventing water damage to the building fabric.

#### VAPOUR BARRIER



*Sisalation 439* will provide an effective vapour barrier when overlapped and sealed with *Insulation Solutions VapaStop™ 883* self adhesive aluminium foil tape.

#### FIRE PERFORMANCE



*Sisalation 439* is flame retardant and is suitable for use in buildings in bushfire prone areas to help lessen fire hazard by preventing the ingress of sparks into the roof space.



# SISALATION™ 439

## Light Duty Foil Laminate



### SPECIFICATION

*Sisalation 439* satisfies the BCA requirements for sarking type materials. It complies with the requirements of AS/NZS4200.1, for “Pliable Building Membranes”, which is a deemed-to-satisfy manual

recognised by the BCA Part 3.5 Roof and Wall Cladding. It has a low flammability index in accordance with AS1530.2 which satisfies the BCA Part 3.7.1 Fire Hazard Properties.

### INSTALLATION

When used as a sarking, all installation should be in accordance with AS/NZS4200.2 “Installation requirements for Pliable Building

Membranes.” To provide optimum insulation values, a minimum air space of 20mm is required adjacent to the reflective foil face.

### PHYSICAL PROPERTIES

*Sisalation 439* exhibits the following properties as defined by AS/NZS4200.1 for “Pliable Building Membranes”.

#### CLASSIFICATIONS:

Duty	Light
Vapour Barrier	High
Emittance	Reflective
Water Barrier	High
Flammability Index	Low

Tensile Strength Machine Direction (kN/m)	Min 7.5
Tensile Strength Lateral Direction (kN/m)	Min 4.5
Edge Tear Resistance Machine Direction (N)	Min 45
Edge Tear Resistance Lateral Direction (N)	Min 45
Water Vapour Transmission Rate (ng/Ns)	Max 2
Emittance of Reflective Face	Max 0.05

### CHEMICAL PROPERTIES

#### DURABILITY

When installing *Sisalation 439*, the cladding, or flooring should be installed without delay.

#### RESISTANCE TO ALKALIS

Aluminium foil is susceptible to alkali attack, so *Sisalation 439* should not be used in contact with wet concrete or mortar.

### HEALTH & SAFETY

There are no known health or safety risks associated with this product for applications described in this data sheet. For additional information, or a Material Safety Data Sheet, please contact your nearest *Insulation Solutions* office.

### STANDARD ROLL SIZES

Roll Width	1350mm	1350mm
Roll Length	60m	20m
Roll Area	81m <sup>2</sup>	27m <sup>2</sup>

### SUSTAINABILITY

Sustainability...measures that satisfy the needs of people today while enhancing the quality of life for future generations. The demands on non-renewable resources for the production of energy are not

sustainable without compromising the environment. Insulation, correctly specified and installed, is one of the most beneficial products in improving energy efficiency and reducing greenhouse gas emissions.



# SISALATION™ 439

## Light Duty Foil Laminate



### THERMAL PERFORMANCE

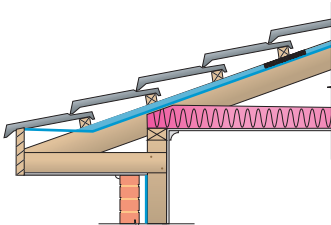
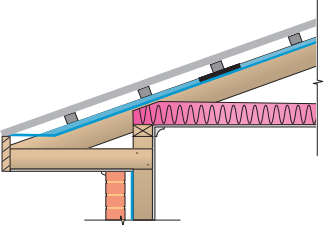
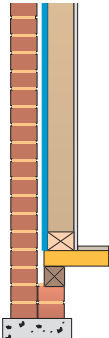
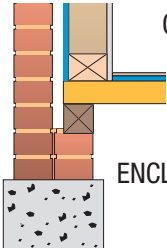
This sisalation complies with the requirements of AS/NZS 4859.1.

The declared Total R-values have been calculated at mean temperatures of 27°C for Summer and 15°C for Winter with a temperature difference of  $6 \pm 0.5K$ . The contribution of this product to

Total R-value depends on installation and environmental conditions which include the effect of dust.

Emittance of reflective foil surface  $\leq 0.05$ , and antiglare  $\leq 0.3$

*Sisalation* in roofs should be installed with a sag of 40mm between rafters.

APPLICATION	SUMMER	WINTER
<p>TILED ROOF - Pitched / Flat Ceiling (<i>Sisalation</i> 439 under battens)</p> 	TOTAL <b>R2.1</b>	TOTAL <b>R0.9</b>
<p>METAL ROOF - Pitched / Flat Ceiling (<i>Sisalation</i> 439 under battens)</p> 	TOTAL <b>R2.1</b>	TOTAL <b>R0.9</b>
<p>BRICK VENEER WALL - (<i>Sisalation</i> 439 on outside of studwork)</p> 	TOTAL <b>R1.3</b>	TOTAL <b>R1.3</b>
<p>FLOOR - Timber Suspended</p> 	<p>OPEN SUB-FLOOR</p> <p>TOTAL <b>R0.6</b></p>	<p>TOTAL <b>R1.0</b></p>
	<p>ENCLOSED SUB-FLOOR</p> <p>TOTAL <b>R0.8</b></p>	<p>TOTAL <b>R1.7</b></p>

DATA SHEET

# SISALATION™ 439

## Light Duty Foil Laminate



### RECOMMENDED INSTALLATION

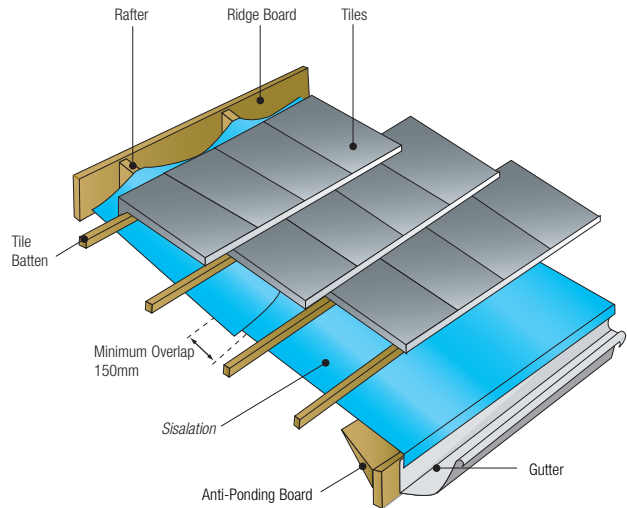
When used as sarking, *Sisalation* should be installed in accordance with AS/NZS4200.2 for the “Installation Requirements for Pliable Building Membranes”. *Sisalation* should be installed using the

following method: To provide optimum insulation values, a minimum air space of 20mm is required adjacent to the reflective foil face. In high wind areas, it may be necessary to install anti-flap pads.

#### 1. ROOF INSTALLATION

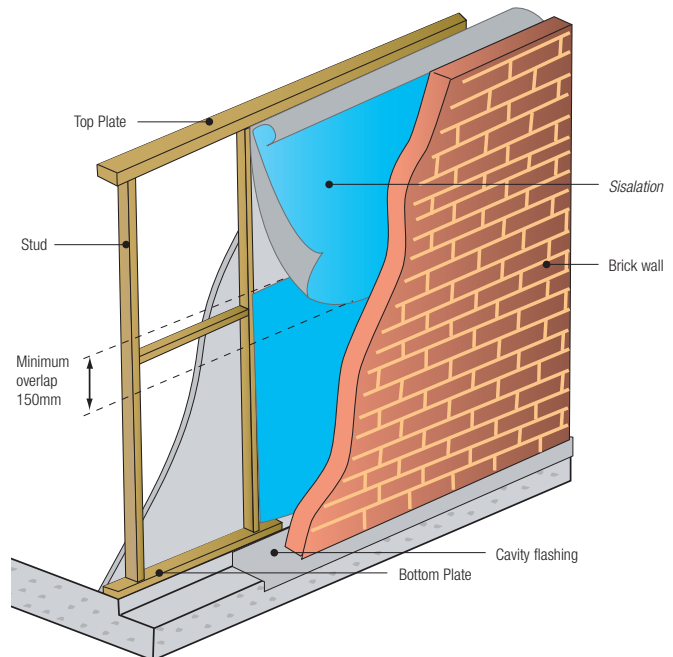
An anti-ponding board should be fixed to the fascia board to prevent water collecting on the lowest sheet of *Sisalation*.

Lay the *Sisalation* across the rafters, antiglare side upward, and temporarily hold in place with tile battens. Start at the eaves with the edge of the sheeting folded under and turned down into the gutter. Lay subsequent sheets, working towards the ridge, overlapping existing sheets by 150mm. Dish the foil 30mm between each rafter. Leave a gap of 50mm at the ridge. In this application *Sisalation* acts as a sarking and a thermal insulation.



#### 2. WALL INSTALLATION

Align the lower edge of the *Sisalation* sheet with the bottom of the bottom plate with antiglare coating facing outwards. Hammer the fixing discs through the sheet to each stud every 300mm up stud. position the top sheet to overlap the bottom sheet by at least 150mm and to seal across the top of the wall cavity. Fix the top sheet at the top plate, the middle of the sheet and the middle of the overlap.



FREECALL 1800 626 624

WEBSITE: [www.eurekainsulation.com.au](http://www.eurekainsulation.com.au)

