

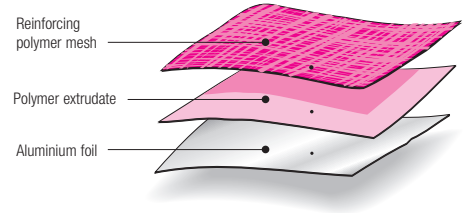
GLADIATOR™ GLADIATOR BREATHER™

Extra Heavy Duty Wall Wrap*



PRODUCT DESCRIPTION

Insulation Solutions™ *Gladiator* and *Gladiator Breather* Tough Wall Wrap are manufactured from bright aluminium foil, laminated to a high strength reinforcing polymer weave. The outer surface is pink to minimise problems with reflected glare during installation. Although the product is light weight for ease of handling during installation, *Gladiator* and *Gladiator Breather* are classified as Extra Heavy Duty Wall Wrap by AS/NZS4200.

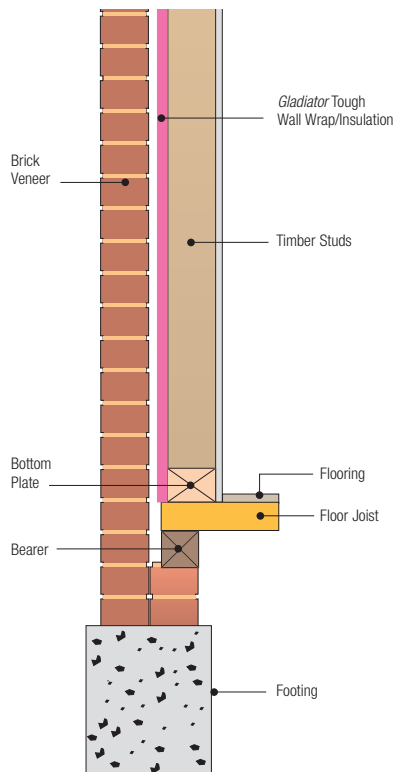


PRODUCT APPLICATION

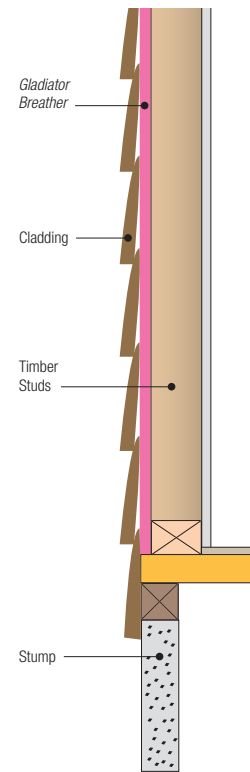
Gladiator and *Gladiator Breather* are designed as a tough, strong and durable barriers to protect walls of buildings from rain and wind. *Gladiator* and *Gladiator Breather* are intended for use on residential buildings behind various cladding materials. Installing *Gladiator* and

Gladiator Breather as a weatherproof “wrap” allows internal fitout to proceed before external cladding is applied. ***Gladiator Breather* foil is recommended behind weatherboard or fibre cement cladding.**

BRICK VENEER
(*Gladiator* on outside of studwork)



WEATHERBOARD OR
FIBRE CEMENT SHEET CLADDING
(*Gladiator Breather* on outside of studwork)



**Gladiator* and *Gladiator Breather* Wall Wrap characteristics are designed to suit wall applications only.

GLADIATOR™ GLADIATOR BREATHER™

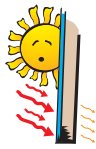
Extra Heavy Duty Wall Wrap*



DATA SHEET

PRODUCT FUNCTION

INSULATION



Gladiator and *Gladiator Breather* have excellent thermal insulation properties. They reduce the flow of radiant heat by 95% which helps to keep buildings warmer in winter and cooler in summer.

When installed correctly around the outside of studwork, *Gladiator* and *Gladiator Breather* will provide a Total R-value of R1.0 in a wall system behind brick veneer cladding and R0.8 behind weatherboard or fibre cement cladding.

ENERGY EFFICIENCY



Gladiator and *Gladiator Breather* reduce summer heat gain and winter heat loss in a building. Importantly this will enhance energy efficiency and help reduce greenhouse gas emissions.

PROTECTION



Gladiator and *Gladiator Breather* will reduce the potential for condensation to occur, preventing water damage to the building.

VAPOUR BARRIER



Gladiator and *Gladiator Breather* provide effective vapour barrier when joints are overlapped and sealed with *Insulation Solutions Vapastop™* 883 self adhesive aluminium foil tape.

FIRE PERFORMANCE



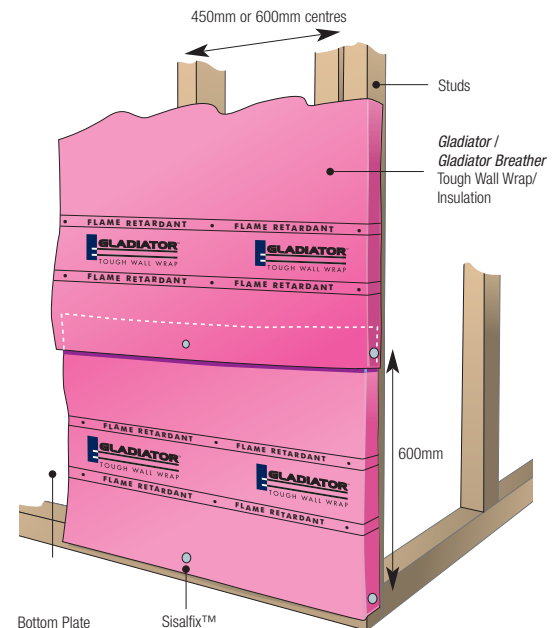
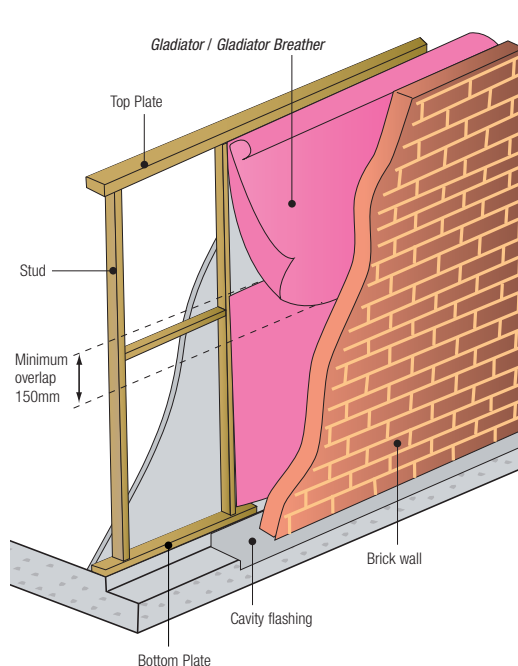
Gladiator and *Gladiator Breather* are manufactured with added flame retardant making it easier to work with and reducing the fire risk. However, good working practice recommends that you cut away *Gladiator* and *Gladiator Breather* foil in plumbing or welding applications.

INSTALLATION

Start fixing *Gladiator* or *Gladiator Breather* Wall Wrap at a corner of the frame with the lower edge of the roll level with the bottom plate. Unroll *Gladiator* or *Gladiator Breather* with the pink anti-glare face outward. Keeping the *Gladiator* or *Gladiator Breather* taut, fix it to each stud using *Insulation Solutions Sisalfix™* fasteners at 600mm centres

vertically. Fix the next run of *Gladiator* or *Gladiator Breather* in the same way, overlapping the lower run by about 100mm.

For good building practice, where plumbing pipes are to be welded - cut *Gladiator* or *Gladiator Breather* away from area around plumbing.



GLADIATOR™ GLADIATOR BREATHER™

Extra Heavy Duty Wall Wrap*



PHYSICAL PROPERTIES

Gladiator and *Gladiator Breather* have the following classifications as defined in AS/NZS4200.1 for "Pliable Building Membranes".

CLASSIFICATIONS:

Duty	Extra Heavy	Water Barrier	High
Vapour Barrier	High	Water Vapour Permeance ng/Ns	Max 2
Emittance	Reflective	Emittance of Reflective Face	Max 0.05
		Flammability Index	Low

CHEMICAL PROPERTIES

DURABILITY

When installing *Gladiator* or *Gladiator Breather*, the cladding should be installed without delay.

RESISTANCE TO ALKALIS

Aluminium foil is susceptible to alkali attack, so *Gladiator* and *Gladiator Breather* should not be used in contact with wet concrete or mortar.

HEALTH & SAFETY

There are no known health or safety risks associated with this product for applications described in this data sheet. For additional information, or a Material Safety Data Sheet, please contact your nearest *Insulation Solutions* office.

STANDARD ROLL SIZES

Roll Width	1350mm
Roll Length	60m
Roll Area	81m ²

WARRANTY

Gladiator and *Gladiator Breather* that has blown away from the walls of a building will be replaced provided:

- Wind speed did not exceed 120kph.
- An external cladding is applied within two months.

- *Gladiator* and *Gladiator Breather* that has been fixed securely using *Sisalfix* fasteners at a maximum spacing of 600mm vertically and horizontally. (Limited to 3 years from date of purchase).

SUSTAINABILITY

Sustainability...measures that satisfy the needs of people today while enhancing the quality of life for future generations. The demands on non-renewable resources for the production of energy are not

sustainable without compromising the environment. Insulation, correctly specified and installed, is one of the most beneficial products in improving energy efficiency and reducing greenhouse gas emissions.

DATA SHEET

GLADIATOR™ GLADIATOR BREATHER™

Extra Heavy Duty Wall Wrap*



THERMAL PERFORMANCE

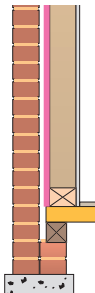
Gladiator and *Gladiator Breather* comply with the requirements of AS/NZS 4859.1.

The declared Total R-values have been calculated at mean temperatures of 27°C for Summer and 15°C for Winter with a

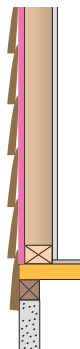
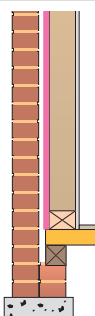
temperature difference of $6 \pm 0.5K$. The contribution of this product to Total R-value depends on installation and environmental conditions which include the effect of dust.

Emittance of reflective foil surface ≤ 0.05 .

GLADIATOR 492

APPLICATION	SUMMER	WINTER
BRICK VENEER WALL - <i>(Gladiator on outside of studwork)</i> 	TOTAL R1.0	TOTAL R1.0

GLADIATOR BREATHER 491

APPLICATION	SUMMER	WINTER
WEATHERBOARD, FIBRE CEMENT SHEET WALL - <i>(Gladiator Breather on outside of studwork)</i> 	TOTAL R0.8	TOTAL R0.8
BRICK VENEER WALL - <i>(Gladiator Breather on outside of studwork)</i> 	TOTAL R1.0	TOTAL R1.0

DATA SHEET



FREECALL 1800 626 624

WEBSITE: www.eurekainsulation.com.au

